

impero education pro

SIS Integration Username Override

Impero Education Pro 2019

EXTERNAL



Introduction

In version 6 of Impero Education Pro we introduced SIS Integration. Powered by the Clever API, this allowed district admins to directly sync the SIS data in Clever with the Impero Server to automate the creation of groups, the adding of students to those groups as members and finally the adding and configuring of teachers to the Console Access Rights so they can only see the groups they teach.

Feedback from customer sites has highlighted a challenge they face when the usernames in the SIS database don't match the usernames used by staff members to log into the device. This mis-match of credentials means that Impero Server is not able to automatically setup the groups and the correct access right for the users. Admins are having to make changes after in the import which is time consuming.

So we have developed a simple override system using a CSV file to address this challenge. The following guide explains how to setup the SIS Integration Username Override CSV file.

CSV File

A CSV file is needed to perform the override of usernames and this must be created manually. Please find below the required name for the CSV file and its default location

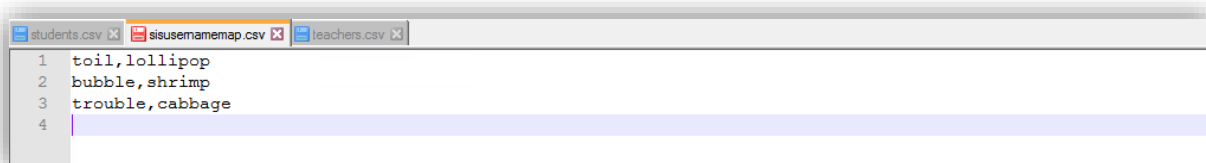
File name - sisusenamemap.csv

Location - C:\Program Files (x86)\Impero Solutions Ltd\Impero Server\Data

(the location above is the default install location of Impero Server. If you have installed Impero Server to a different location then the CSV file must be placed in the data directory at that location)

The CSV file needs to contain two values. The first is the username that was pulled from SIS system and the second is the username that you want Impero to use.

In the example below *toil*, *bubble* and *trouble* are usernames that were pulled from the SIS system and *lollipop*, *shrimp*, *cabbage* are the usernames we want Impero to use instead.



```
students.csv x sisusenamemap.csv x teachers.csv x
1 toil,lollipop
2 bubble,shrimp
3 trouble,cabbage
4
```

Once you have configured the “sisusenamemap.csv” file it must be placed in the data directory of the Impero Server. The next time the Server performs an SIS Import it will check the CSV override file and make the configured changes.

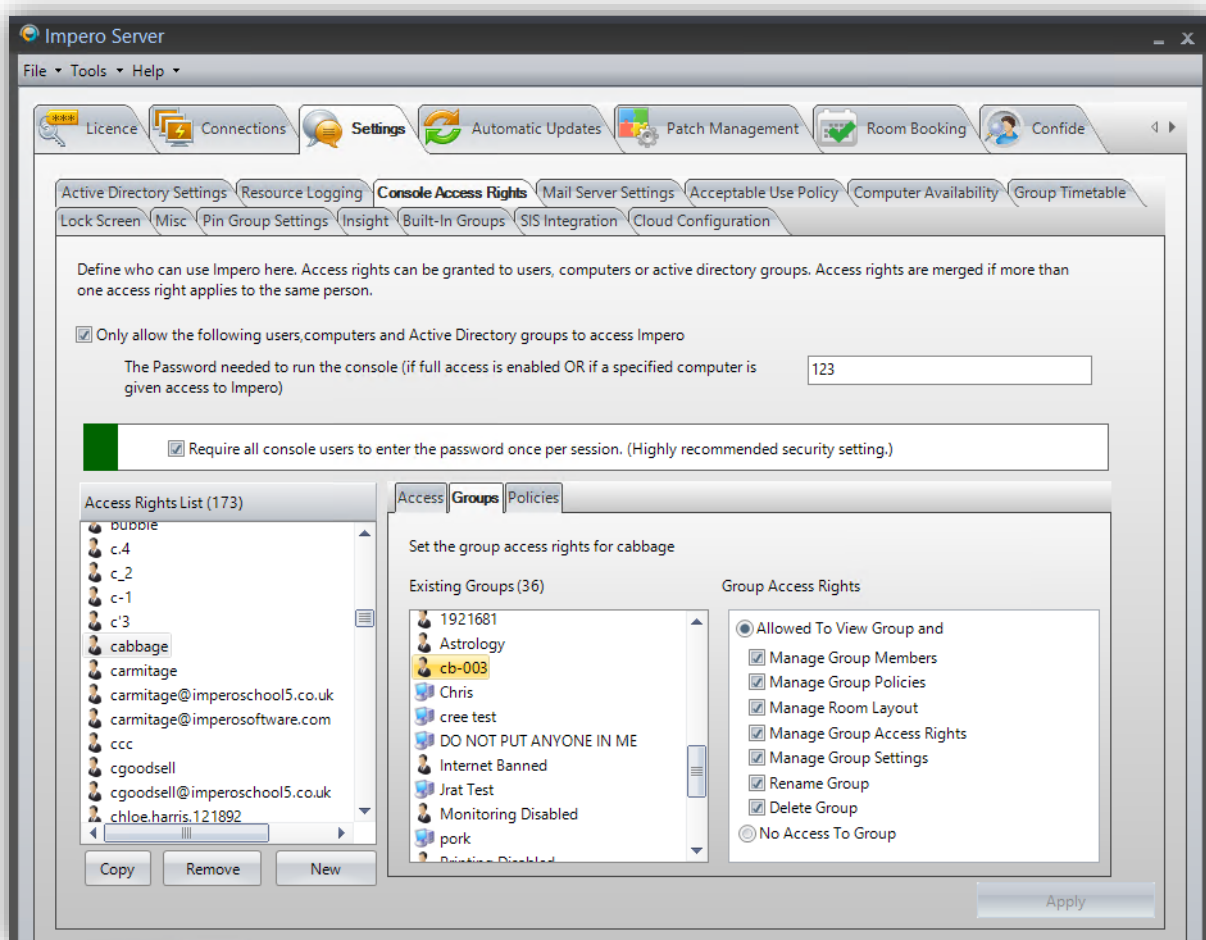
In the image below we can see an example of the type of data used during a SIS import. *toil*, *bubble* and *trouble* all have access to the class or group “cb-003” but our CSV override file is telling us to change these usernames to *lollipop*, *shrimp*, *cabbage*.

```

students.csv x  sisusemap.csv x  teachers.csv x
1  version,1
2  username,class
3  0-26,cb-003
4  0-27,cb-003
5  0-28,cb-003
6  0-29,cb-003
7  0-30,cb-003
8  toil,cb-003
9  trouble,cb-003
10 bubble,cb-003
11

```

After the Import is complete, if we check our Console Access Rights we can see that the group “cb-003” has been made available to the correct username as per the CSV override file



info@imperosoftware.com

www.imperosoftware.co.uk

www.imperosoftware.com

+44 (0) 1509 611341 UK

877-883-4370 USA