

impero education pro

Impero Education Pro

Disable Monitoring Guide

EXTERNAL

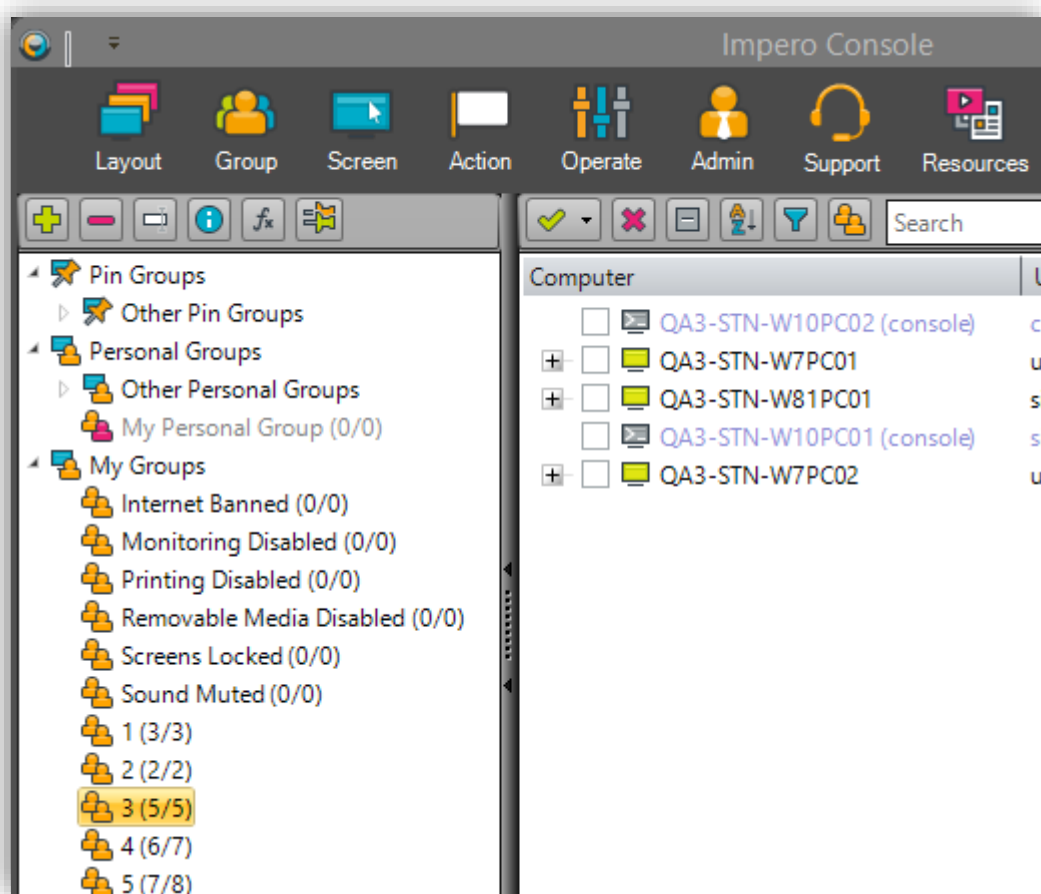


Disable Monitoring

Outlined below is functionality to disable Impero’s monitoring functionality, customer feedback highlighted that our customers wanted the ability to disable monitoring on Staff devices but ensure they can continue to use the Impero Console. And that for School devices which were either being used outside of normal school hours or were being taken home, customers wanted the ability to disable monitoring during this time.

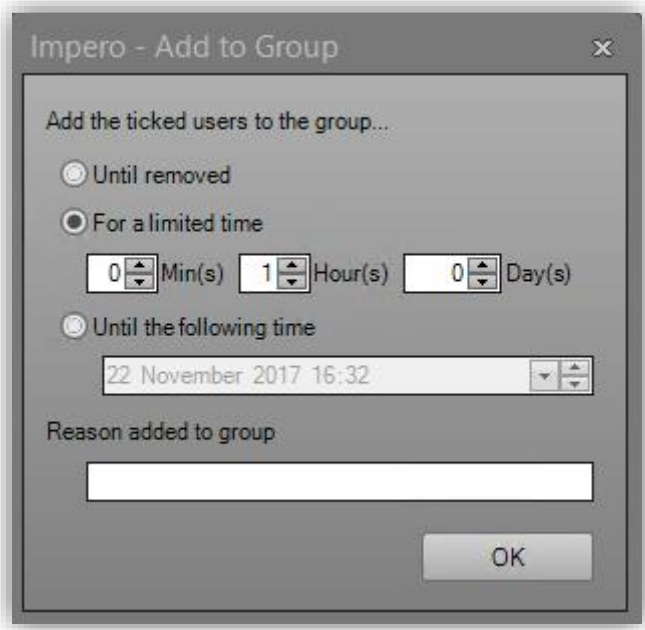
New functionality includes the creation of a new built in group called ‘Monitoring Disabled’

Impero Education Pro Console



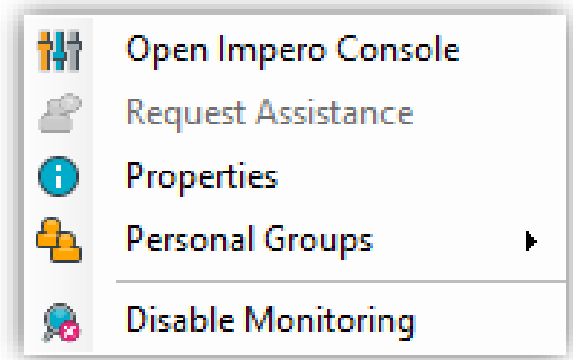
New built in group ‘Monitoring Disabled’

With the ability to add users and or devices ‘until removed’ or for a ‘limited time’ as per other built in groups in the usual manor.

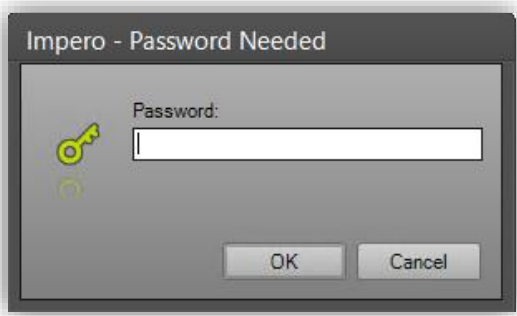


Disable Monitoring in tray menu

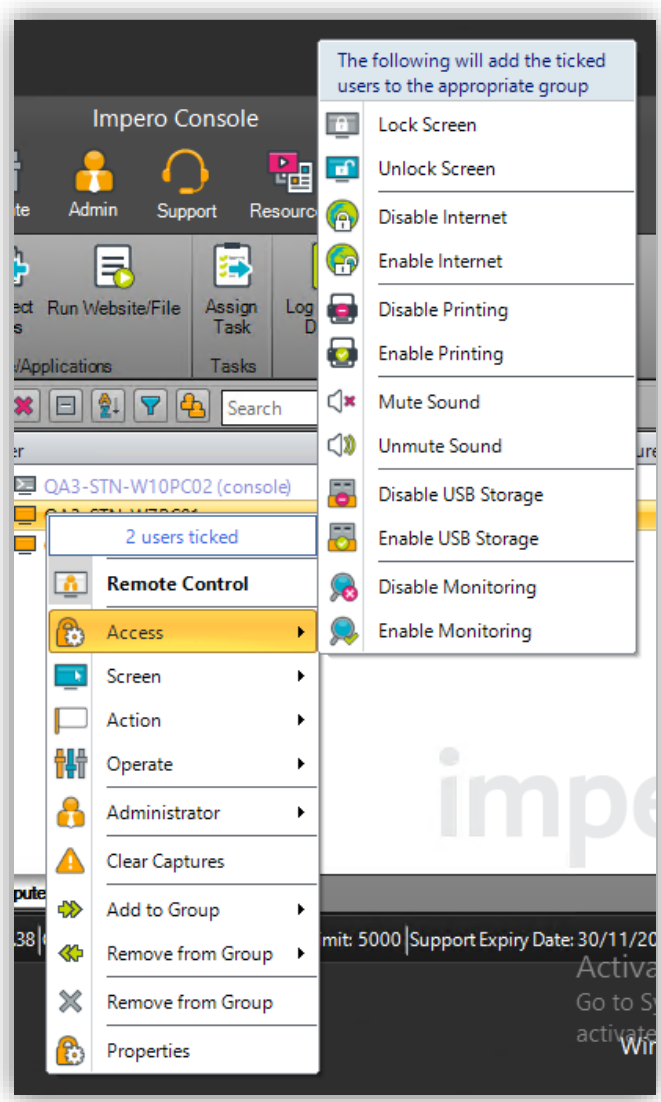
**PLEASE NOTE* - Based on customer feedback, “Disable Monitoring” has replaced “Disable Workstation” in the tray menu. This change allows console users, who have access, to turn off monitoring while still being able to use Impero Console*



With a Console password needed to disable

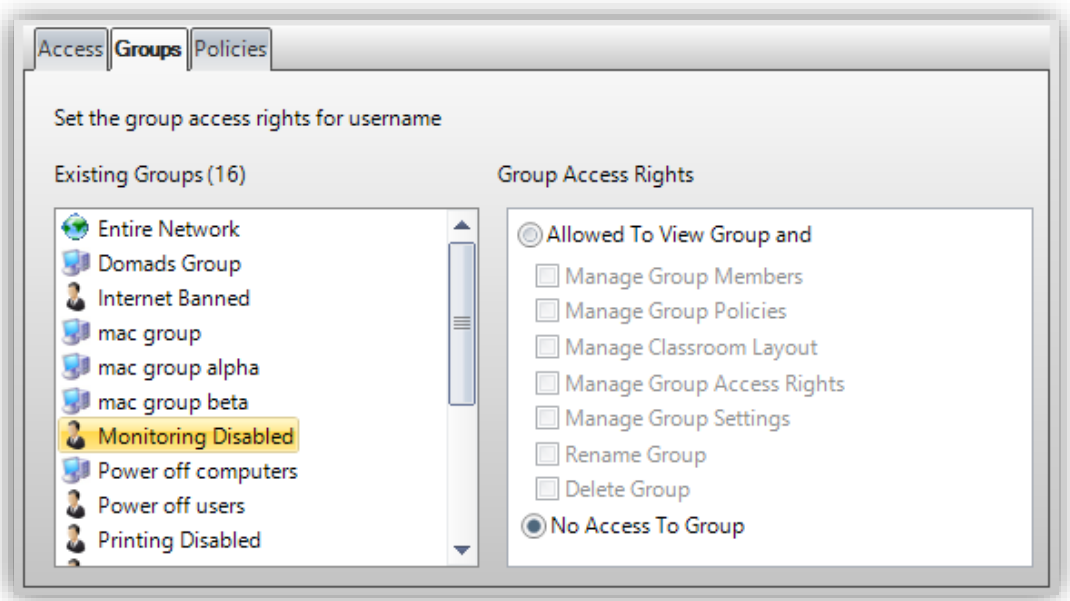
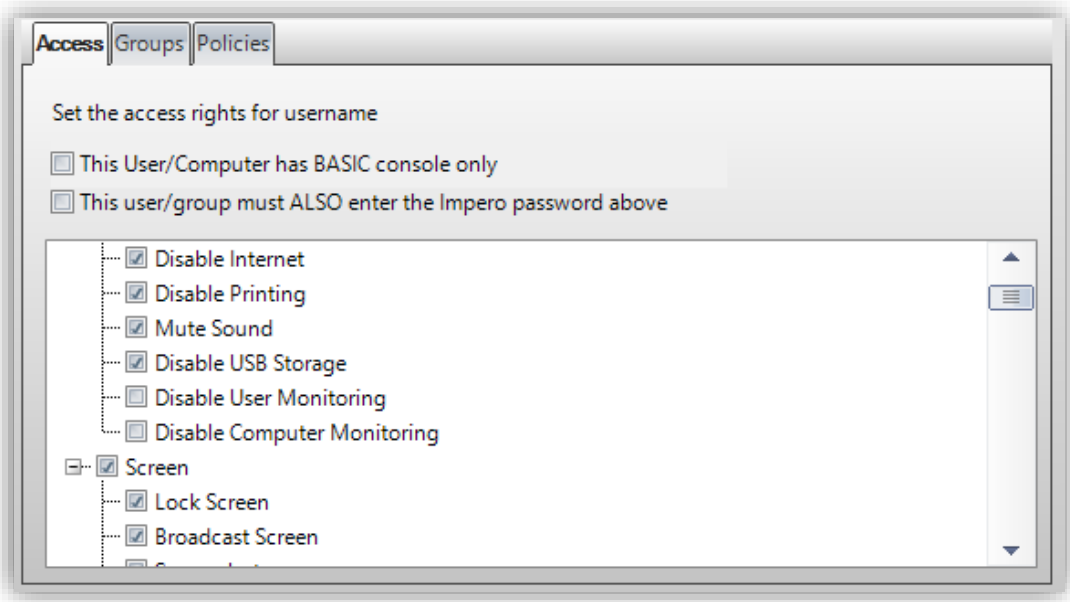


Disable monitoring entries on Access menu and toolbars

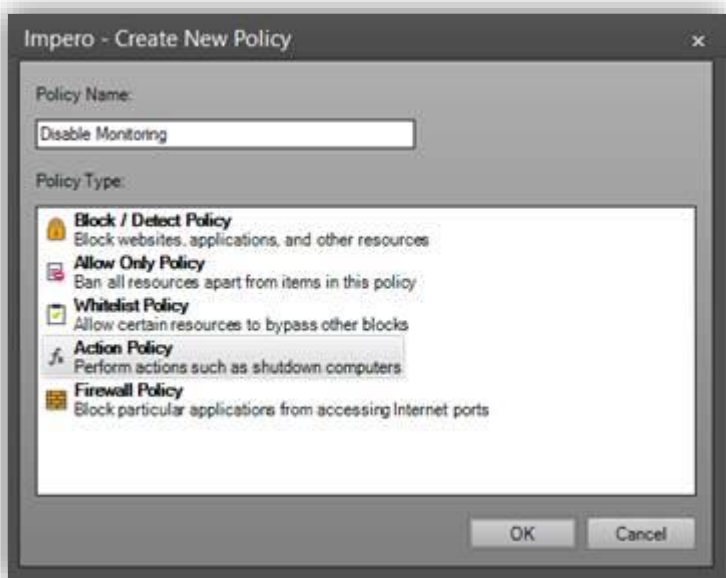


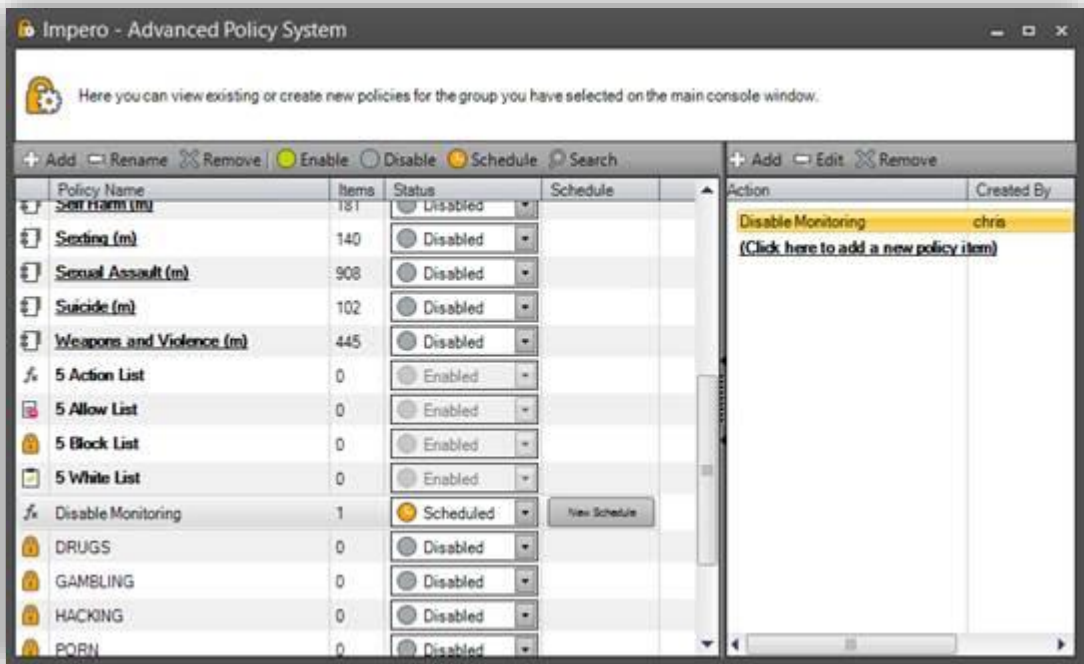
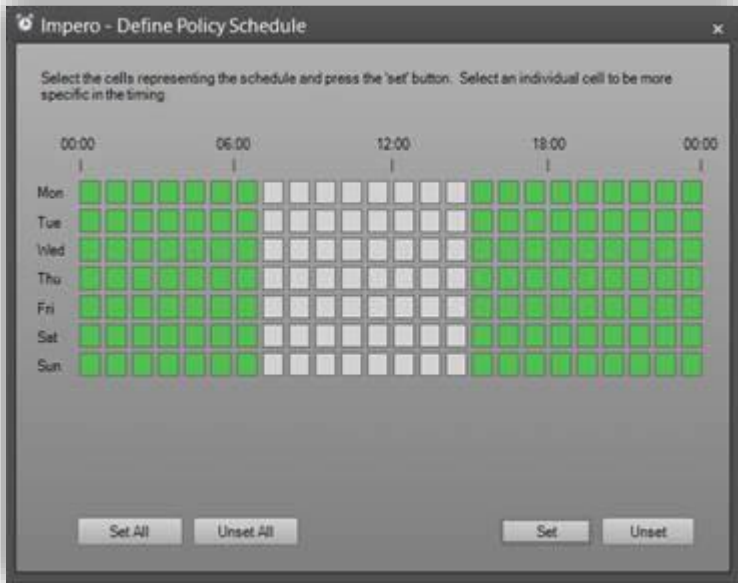
Impero Server app.

New console access rights for monitoring disabled. Due to the sensitive nature of this new functionality it has been decided that, By default, Monitoring Disabled is NOT enabled. Existing console users will need to enable the new options from the console access rights on Impero Server. In addition new users/devices added to console access rights will NOT have this feature enabled by default.



And this can then be schedulable via an action policy.





Both Windows and Mac Consoles support this new feature and allow for configuration of Monitoring Disabled groups and policies.

All supported platforms obey the Monitoring Disabled rule (Windows, MacOS, iOS and ChromeOS)

**Please Note* - iOS and Chromebooks require an active connection to Impero Server for logging to function*

info@imperosoftware.com

www.imperosoftware.co.uk

www.imperosoftware.com

+44 (0) 1509 611341 UK

877-883-4370 USA